



# MHT SERIES

HEAVY CAPACITY telescopic handlers





# SUCCESS THROUGH IMAGINATIVE POWER

MANITOU, the world's largest manufacturer of rough terrain forklift trucks, has its roots in a family tradition of innovation and imaginative power. For generations, the Braud family has dedicated themselves to creating innovative products for the lifting and handling markets.

Manufacturing its first truck in 1953, MANITOU is a pioneer in the rough terrain forklift market. By responding to market trends, MANITOU offers a complete line of rough terrain handling equipment adapted to the specific needs and challenges of each industry.

The long history of reliable, relevant equipment has led to more than 300,000 MANITOU rough terrain forklifts operating daily in more than 120 countries. This worldwide presence is backed up by a MANITOU dealer network staffed with trained mechanics and sales specialists to help you with your material handling requirements.



# SUPER DUTY



***The MANITOU MHT Series heavy capacity telescopic handlers are designed to handle the most demanding jobs in the most extreme conditions.***

These heavy-duty machines have the power and precision necessary for work in the mining, quarrying, large-industrial, infrastructure, recycling, and construction industries. With a wide-range of accessories designed to meet the needs of a variety of applications, the MHT Series heavy capacity telescopic handler provides an array of solutions on the jobsite.

## **MHT 780**

- Maximum lift capacity of 17,637 lbs. (8,000 kg)
- Maximum lift height of 22'4" (6.8 m)
- Powerful 144 hp (106 kW) Perkins turbo-diesel engine

## **MHT 10120**

- Maximum lift capacity of 26,456 lbs. (12,000 kg)
- Maximum lift height of 31'8" (9.65 m)
- Powerful Mercedes 175 hp (129 kW) turbo-diesel engine

## **NEW MHT 10180**

- Maximum lift capacity of 36,684 lbs. (18,000 kg)
- Maximum lift height of 31'10" (9.7 m)
- Powerful Mercedes 175 hp (129 kW) turbo-diesel engine

## **NEW MHT 10225**

- Maximum lift capacity of 49,604 lbs. (22,500 kg)
- Maximum lift height of 31'10" (9.7 m)
- Powerful Mercedes 175 hp (129 kW) turbo-diesel engine





**“It’s perfect for  
heavy-duty work”**

***The **MHT 780 and MHT 10120** heavy capacity telescopic handlers offer extreme material handling performance in a more compact package, making them ideal for working in close confines.***

### **BRING ON THE POWER**

Get the power you need with a Perkins 144 hp (106 kW) turbo-diesel engine on the MHT 780 and an impressive 175 hp (129 kW) turbo diesel engine on the MHT 10120. Coupled with a maximum torque of 610 ft.-lbs. (556 Nm) and 498 ft.-lbs. (675 Nm) respectively, these machines have the bottom-end power to handle the most demanding work.

### **COMPACT PERFORMANCE**

A compact design, low overall weight and tight turning radius allows the MHT 780 and MHT 10120 to move precisely in tight confines with ease. Three steering modes provide flexibility to maneuver safely around obstacles as conditions require.

### **MATERIAL HANDLING PROS**

With a maximum lift capacity of 17,637 lbs. (8000 kg) on the MHT 780 and 26,456 lbs. (12,000 kg) on the MHT 10120, there are few loads these machines cannot handle. Frame levelling on the MHT 10120 allows a vertical load path on uneven surfaces.

# EXTREME PERFORMANCE

**The All-New MHT 10180 and MHT 10225 heavy capacity telescopic handlers feature increased load capacities over previous models, which means more work can be done in less time.**

## IMPRESSIVE CAPACITIES

With a maximum load capacity of 39,683 lbs. (18,000 kg) on the MHT 10180 and 49,604 lbs. (22,500 kg) on the MHT 10225, heavy-duty work can be completed quickly and effectively.

## LIFT HIGHER, REACH FARTHER

The robust telescopic boom lifts loads up to 31'10" (9.7 m) for optimal material handling performance in a variety of applications. Plus, a forward reach of up to 19'4" (5.9 m) on the MHT 10225 makes moving heavy payloads and placing bulky objects easy. Both models are equipped with frame levelling, allowing a vertical load path on uneven surfaces.

## PACKED WITH POWER

The powerful Mercedes 175 hp (129 kW) turbo-diesel engine with a max torque of 698 ft.-lbs. (675 Nm) coupled with a hydraulic flow at 43.6 gpm (165 L/min) provides these machines with the power needed to complete demanding projects.



## MADE FOR HARD WORK

MANITOU MHT Series heavy capacity telescopic handlers are designed for heavy-duty work in rough-terrain applications. Various options and attachments allow you to tailor the machine to your specific needs and increase utilization. The MHT Series is sure to become a key component in your fleet.



## HYDROSTATIC TRANSMISSION

The hydrostatic transmission provides precise control of the machine speed and dynamic braking, facilitating greater accuracy and safety.

## TELMA BRAKES STANDARD

The exclusive TELMA brakes allow progressive braking on long downhill slopes without component wear or brake fade. This enhances both control and safety (optional on MHT 10120 and 10180, standard on MHT 10225).



## ALL-TERRAIN PERFORMANCE

An oscillating rear axle and frame levelling allows the chassis to remain level on uneven surfaces. Severe-duty tires and a high ground clearance provide exceptional capability on loose materials and rough terrain.





**“Settle into comfort,  
all day long”**

**The operator’s station on the *MHT Series* heavy capacity telescopic handlers provides operators state-of-the-art ergonomics and machine control to maximize productivity.**

### **SPACIOUS CAB**

Complete with a soundproofing package, the cab on the MHT Series is designed for comfort and productivity. A plush, adjustable suspension seat, adjustable steering wheel and air recycling provides an ideal environment for the operator. The upper door latches open for enhanced ventilation and ease of communication to personnel outside the machine. The ROPS/FOPS provides state-of-the-art protection for the operator.

### **EXCELLENT CONTROLLABILITY**

JSM (Joystick, Switch and Move) Joystick on the MHT Series incorporates all drive and hydraulic functions into a single ergonomic control, leaving the left-hand free to steer the machine. The JSM is capable of performing three simultaneous functions. The high-output load sensing hydraulic system supports multiple functions with no loss of speed.

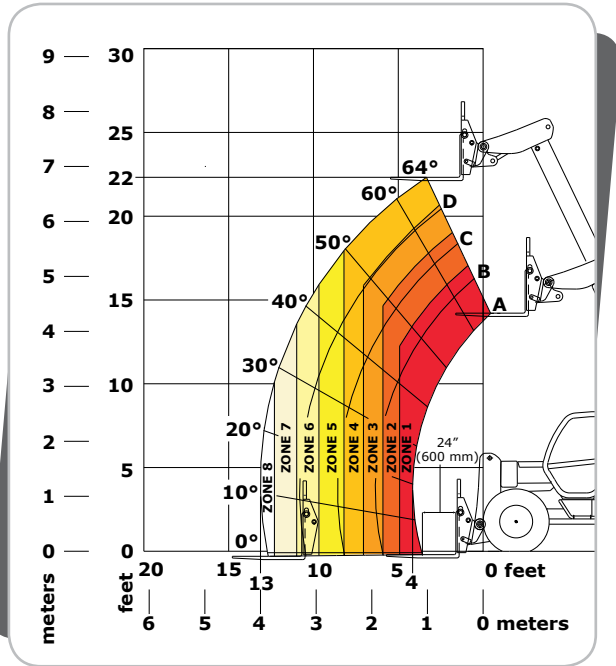
### **ALL-AROUND VISIBILITY**

High position, large windows on all sides and a glazed roof panel, allow for virtually 360-degree visibility from the cab for added precision, productivity and safety. Rear-view mirrors and a rotating lamp further enhance visibility.



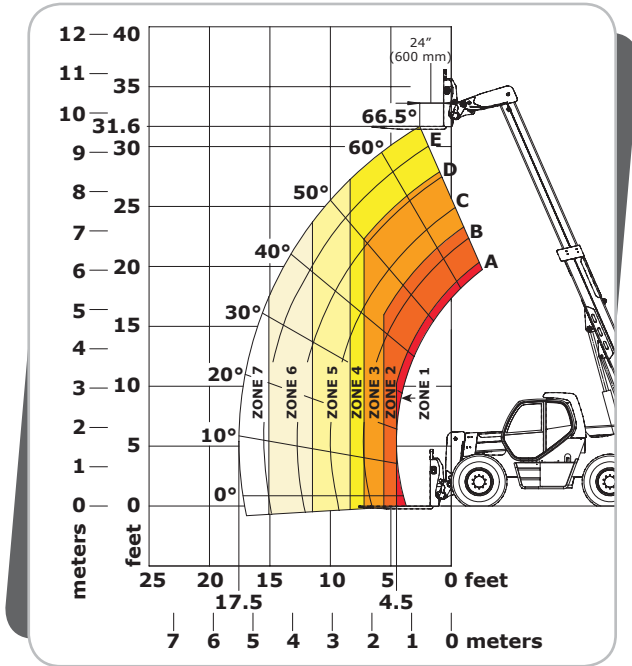
# MHT TELESCOPIC HANDLER LOAD CHARTS

ANSI/ITSDF B56.6, Safety Standard for Rough Terrain Forklift Trucks



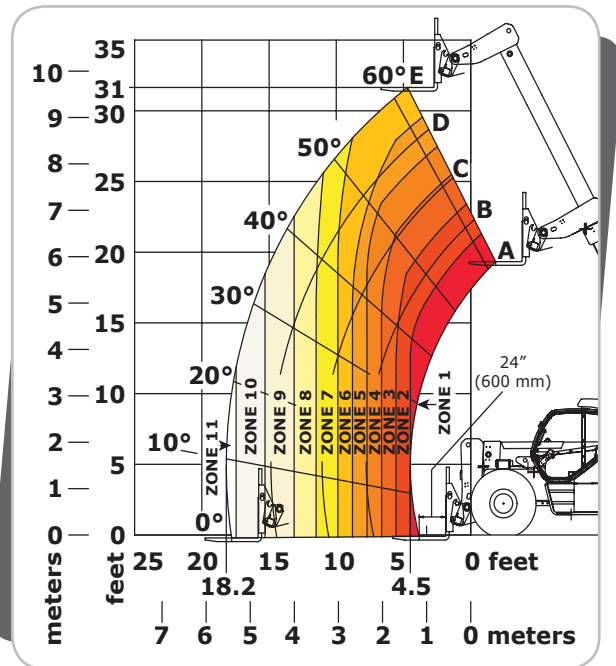
## MHT 780 CHART ZONES

- |                          |                         |
|--------------------------|-------------------------|
| 1. 17,637 lbs. (8000 kg) | 5. 8,818 lbs. (4000 kg) |
| 2. 15,432 lbs. (7000 kg) | 6. 7,716 lbs. (3500 kg) |
| 3. 13,228 lbs. (6000 kg) | 7. 6,614 lbs. (3000 kg) |
| 4. 11,023 lbs. (5000 kg) | 8. 6,063 lbs. (2750 kg) |



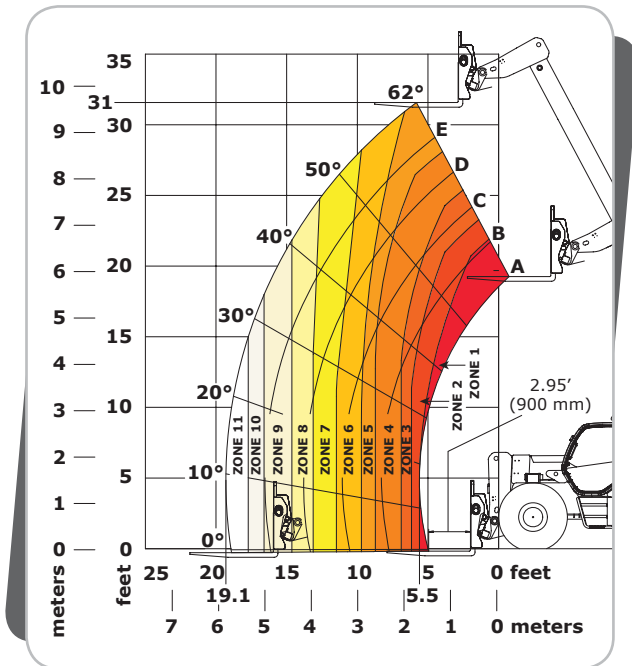
## MHT 10120 CHART ZONES

- |                            |                          |
|----------------------------|--------------------------|
| 1. 26,456 lbs. (12,000 kg) | 5. 11,023 lbs. (5000 kg) |
| 2. 22,046 lbs. (10,000 kg) | 6. 7,716 lbs. (3500 kg)  |
| 3. 17,637 lbs. (8000 kg)   | 7. 6,393 lbs. (2900 kg)  |
| 4. 15,432 lbs. (7000 kg)   |                          |



## MHT 10180 CHART ZONES







- |                            |                            |
|----------------------------|----------------------------|
| 1. 39,684 lbs. (18,000 kg) | 7. 17,637 lbs. (8,000 kg)  |
| 2. 33,069 lbs. (15,000 kg) | 8. 14,330 lbs. (6,500 kg)  |
| 3. 28,660 lbs. (13,000 kg) | 9. 12,125 lbs. (5,500 kg)  |
| 4. 26,455 lbs. (12,000 kg) | 10. 11,023 lbs. (5,000 kg) |
| 5. 25,353 lbs. (11,500 kg) | 11. 10,472 lbs. (4,750 kg) |
| 6. 19,842 lbs. (9,000 kg)  |                            |



## MHT 10225 CHART ZONES

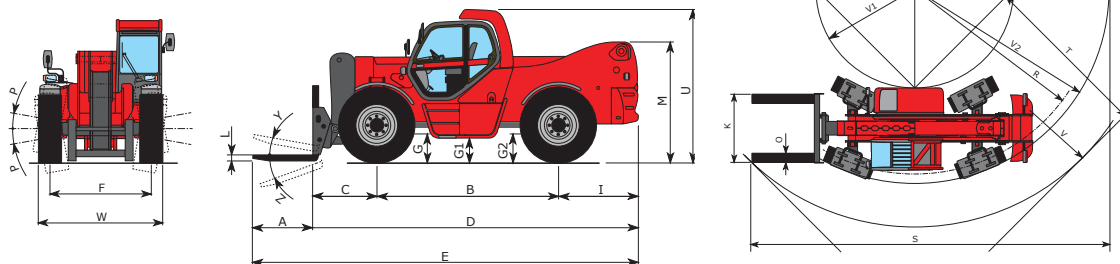
- |                            |                           |
|----------------------------|---------------------------|
| 1. 49,604 lbs. (22,500 kg) | 7. 20,944 lbs. (9,500 kg) |
| 2. 44,092 lbs. (20,000 kg) | 8. 17,637 lbs. (8000 kg)  |
| 3. 39,683 lbs. (18,000 kg) | 9. 15,432 lbs. (7000 kg)  |
| 4. 33,069 lbs. (15,000 kg) | 10. 14,771 lbs. (6700 kg) |
| 5. 29,762 lbs. (13,500 kg) | 11. 13,228 lbs. (6000 kg) |
| 6. 25,353 lbs. (11,500 kg) |                           |

# MHT SERIES TELESCOPIC HANDLER SPECIFICATIONS

	MHT 780	MHT 10120	MHT 10180	MHT 10225	
 CAPACITIES	Lift Capacity (kg)	17,637 lbs. (8000)	26,456 lbs. (12,000)	39,684 lbs. (18,000)	49,604 lbs. (22,500)
	Max. Lift Height (m)	22'4" (6.8)	31'6" (9.62)	31'10" (9.7)	31'10" (9.7)
	Capacity at Max. Lift Height (kg)	11,023 lbs. (5000)	15,432 lbs. (7000)	19,842 lbs. (9000)	29,762 lbs. (13,500)
	Max. Forward Reach (m)	13'1" (4)	17'7" (5.35)	18'1" (5.5)	19'4" (5.9)
	Cap. at Max. Forward Reach (kg)	6,063 lbs. (2750)	6,963 lbs. (2900)	10,472 lbs. (4750)	13,228 lbs. (6000)
 ENGINE	Manufacturer	Perkins	Mercedes	Mercedes	Mercedes
	Power (kW)	144 hp (106) Tier III	175 hp (129) Tier III	175 hp (129) Tier III	175 hp (129) Tier III
	Aspiration	Turbocharged	Turbocharged	Turbocharged	Turbocharged
	Model	1104 D-E 44 TA	OM 904 LA.E3A/1	OM 904 LA.E3A/1	OM 904 LA.E3A/1
	Rated Speed	2200 rpm	2200 rpm	2200 rpm	2200 rpm
	Torque (Nm) @ rpm	410 ft.-lbs. (556) @ 1400	498 ft.-lbs. (675) @ 1200 to 1600	498 ft.-lbs. (675) @ 1200 to 1600	498 ft.-lbs. (675) @ 1200 to 1600
 COMPONENTS	Transmission	Hydrostatic	Hydrostatic	Hydrostatic	Hydrostatic
	Max Travel Speed (km/hr)	21.7 mph (35)	19 mph (31)	15.5 mph (25)	15.5 mph (25)
	Selective Steering	2-Wheel, 4-Wheel, Crab			
	Brakes	Oil-Immersed, Disc-Type			
	Parking Brake	Spring-Applied, Hydraulic-Released			
Axle Manufacturer	Dana	Dana	OMCI Heavy duty	OMCI Heavy duty	
 HYDRAULIC SYSTEM	Pump Type	Variable Displacement			
	Total Capacity (L/min)	37 gpm (140)	43.6 gpm (165)	43.6 gpm (165)	43.6 gpm (165)
	System Pressure (bar)	3988.5 psi (275)	5076.3 psi (350)	5076.3 psi (350)	5076.3 psi (350)
 GENERAL SPECIFICATIONS	Approximate Weight (kg)	28,164 lbs. (12,775)	37,326 lbs. (16,930)	53,087 lbs. (26,080)	65,698 lbs. (29,800)
	Length - Less Forks (m)	17'2" (5.23)	19'6" (5.95)	21'8" (6.61)	22'6" (6.86)
	Width (m)	8'0" (2.44)	8'2" (2.50)	8'2" (2.50)	8'9" (2.66)
	Ground Clearance (mm)	15" (380)	18" (445)	27" (685)	20" (510)
	Wheelbase (mm)	8'9" (2670)	10'10" (3300)	12'8" (3650)	12'8" (3650)
	Turning Radius (m)	10'9" (3.265)	14'10" (4.53)	18'8" (5.685)	19'10" (6.05)
	Overall Height (mm)	8'6.5" (2605)	9'6" (2885)	9'6" (2935)	9'7" (2960)
	Standard Tires	18 x 22.5 16PR	17.5 R25 EM60	16.00 (445/95) R25 XLB 177E	18.00R25 EV-3+ 206A2 IND.
	Drawbar Pull (daN)	23,605 lbf. (10,500)	25,403 lbf. (11,300)	34,845 lbf. (15,500)	39,117 lbf. (17,400)
 CAPACITIES	Radiator Capacity (L)	3.96 gal. (15)	4.2 gal. (16)	6.2 gal. (16)	6.2 gal. (16)
	Engine Oil Capacity (L)	2.14 gal. (8.1)	2.14 gal. (8.1)	6.2 gal. (16)	6.2 gal. (16)
	Hydraulic Reservoir Cap. (L)	37 gal. (140)	76.6 gal. (290)	52.8 gal. (200)	52.8 gal. (200)
	Fuel Tank Capacity (L)	31.7 gal. (120)	52.8 gal. (200)	52.8 gal. (200)	52.8 gal. (200)

	MHT 780	MHT 10120	MHT 10180	MHT 10225
A	3'11" (1200)	3'11" (1200)	3'11" (1200)	5'11" (1800)
B	8'9" (2670)	10'10" (3300)	12'0" (3650)	12'0" (3650)
C	3'6" (1075)	4'0" (1225)	6'5" (1335)	4'6" (1350)
D	17'2" (5225)	19'6" (5950)	21'8" (6605)	22'6" (6860)
E	2'11" (6425)	2'3" (7150)	2'5" (7805)	2'8" (8660)
F	6'6" (1990)	6'5" (1956)	6'10" (2070)	6'10" (2070)
G	15" (380)	22" (550)	27" (685)	20" (510)
G1	17.5" (445)	18" (445)	17.5" (445)	18.5" (470)
G2	17.5" (445)	22" (550)	27" (685)	20" (510)
I	4'10" (1480)	4'8" (1425)	5'4" (1620)	6'1" (1860)
K	5'9" (1750)	4'8" (1430)	5'9" (1750)	6'7" (2000)
L	2" (60)	3" (70)	3" (80)	4" (100)
M	6'1" (1865)	7'7" (2300)	7'7" (2300)	7'8" (2325)
O	8" (200)	8" (200)	8" (200)	10" (250)
P	0°	10°	10°	4°
R	9'8" (2990)	13'11" (4233)	17'10" (5445)	18'10" (5750)
S	26'3" (8040)	30'2" (9205)	33'11" (10,345)	39'6" (12,030)
T	13'3" (4070)	15'2" (4615)	14'0" (4255)	16'6" (5040)
U	8'6.5" (2605)	9'6" (2900)	9'8" (2935)	9'9" (2960)
V	14'6" (4420)	19'3" (5868)	22'4" (6810)	23'11" (7280)
V1	5'4" (1630)	5'7" (1690)	9'5" (2870)	10'6" (3160)
V2	10'9" (3625)	14'10" (4528)	18'8" (5685)	19'10" (6050)
W	8'0" (2440)	8'2" (2500)	8'2" (2500)	8'9" (2660)
Y	12°	20°	12°	12°
Z	126°	115°	105°	105°

## DIMENSIONS REFERENCE DIAGRAMS (MHT 10180 shown)



This publication in no way constitutes an offer and the company reserves the right to alter specification without notice.

